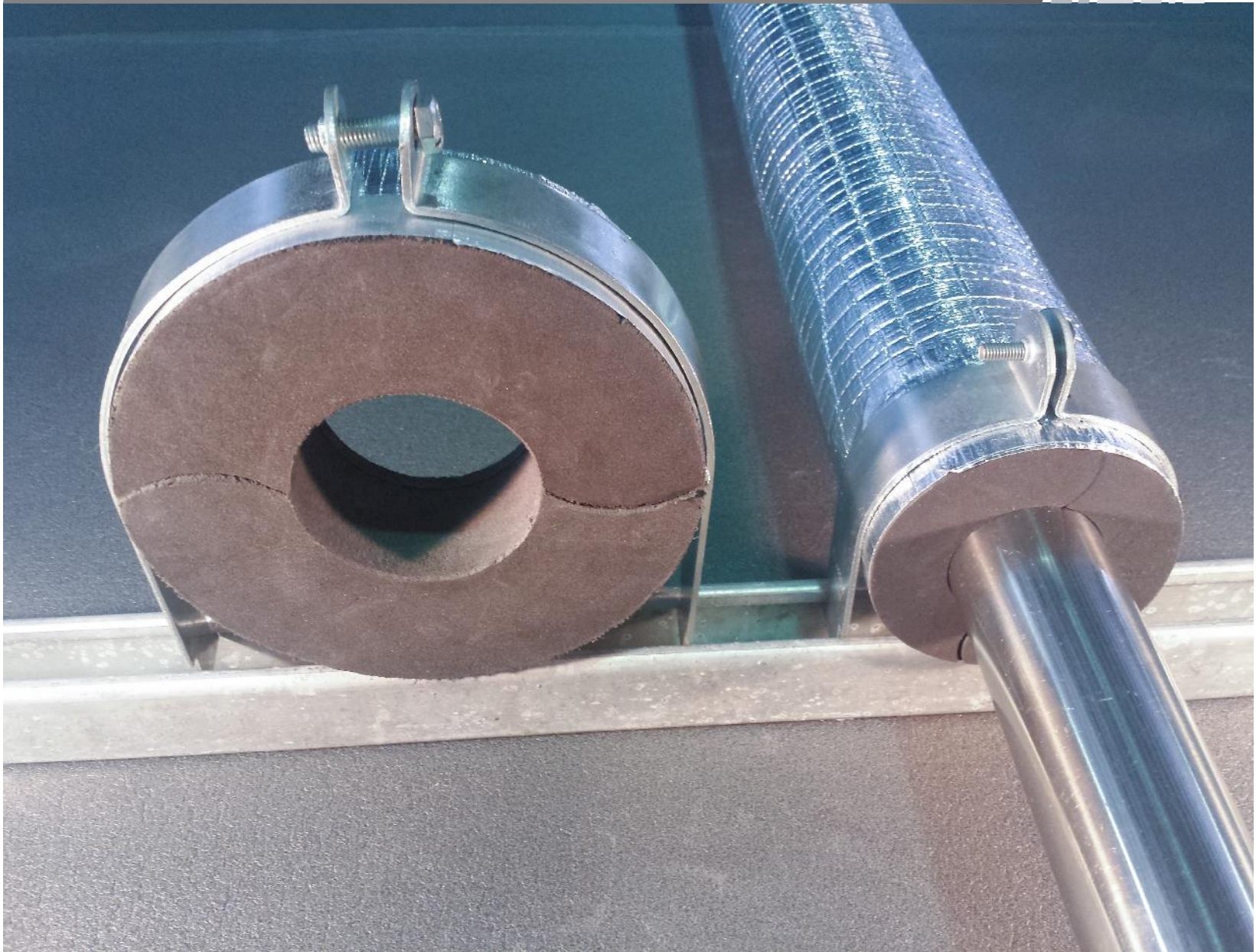


# **THERMOBREAK<sup>®</sup> Thermaloc**

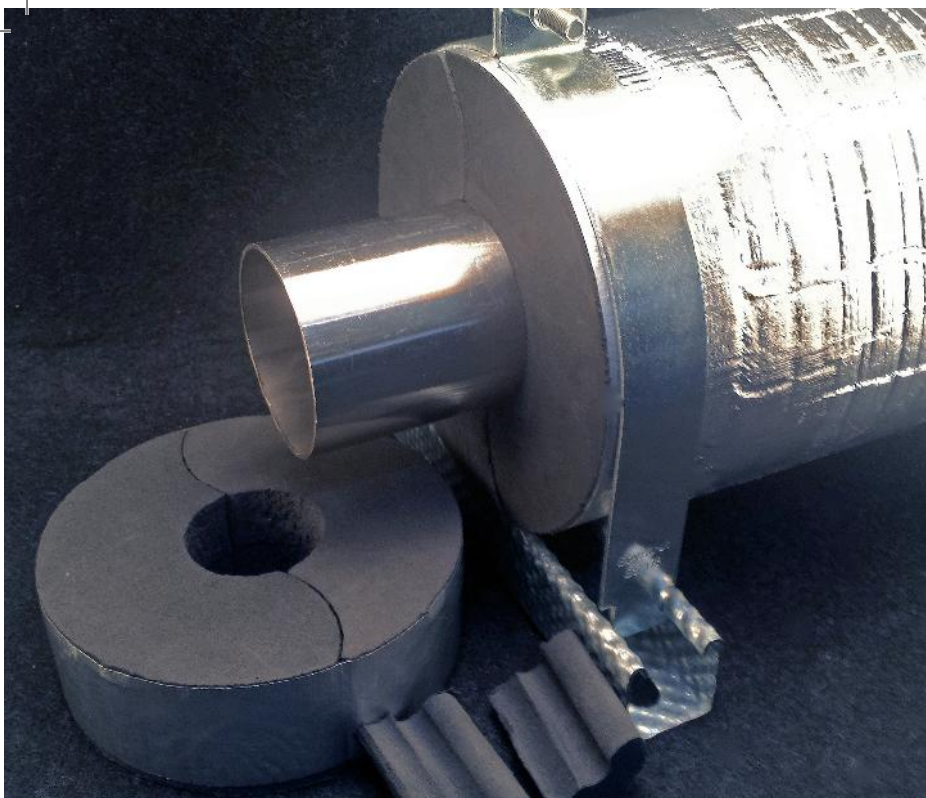
**HOT & COLD PIPE SUPPORTS**



Thermobreak<sup>®</sup> Thermaloc is a lightweight and extremely tough closed cell polyethylene foam pipe support.

**SEKISUI**

**FOAM**  
**INTERNATIONAL**  
Global Foam Solutions



# Thermaloc

## Thermaloc Hot & Cold Pipe Supports

Light weight and extremely tough Thermobreak® Thermaloc is a high density, closed cell, cross linked polyethylene polymer foam pipe support for hot and cold applications.

### Easy & Safe to Install

Thermaloc installation is as simple as placing the two pieces over the pipe, squeezing together gently and applying foil tape. No cutting means no fibres, no dust, no mess to clean up afterwards and no need for protective face masks and gloves.

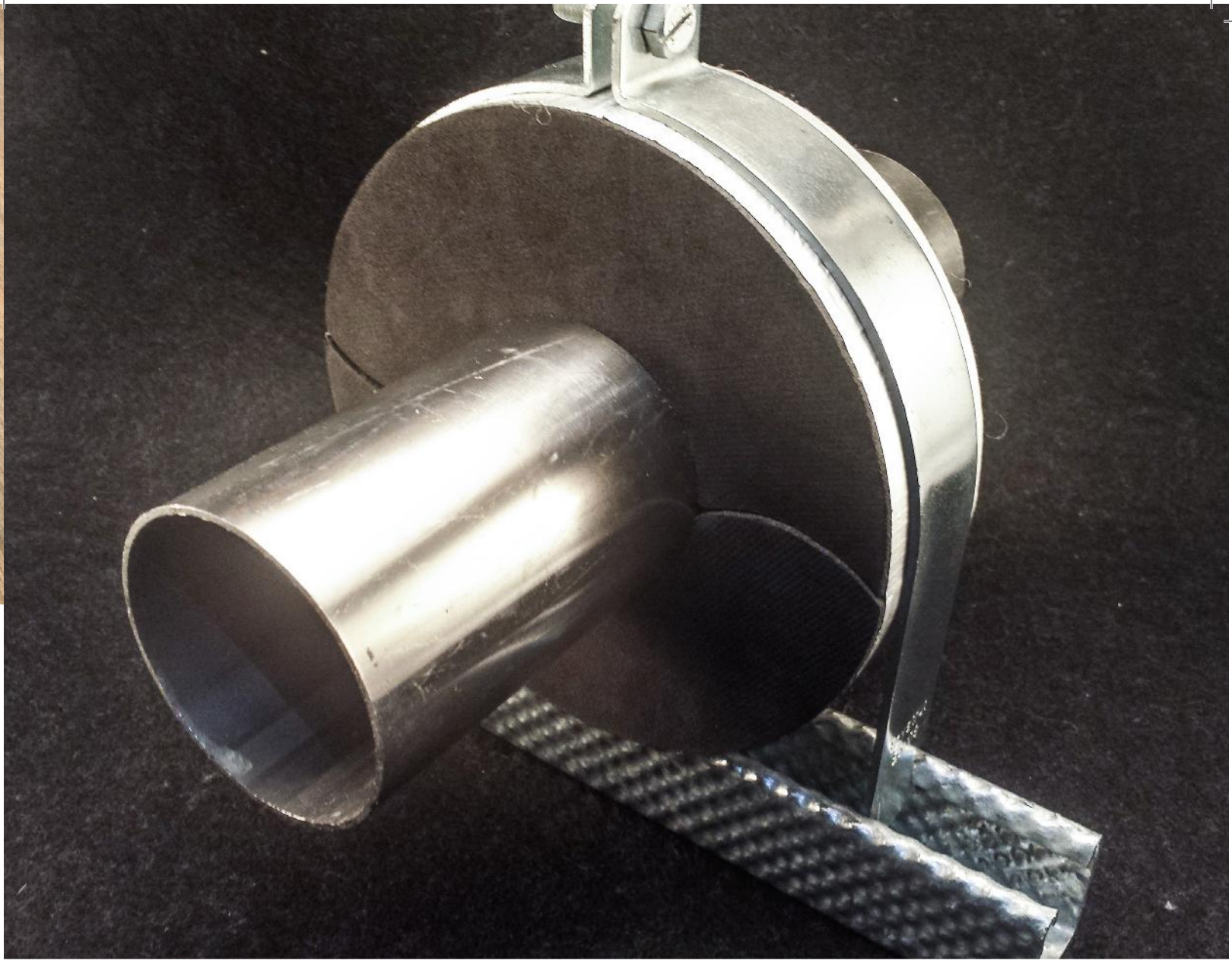
Thermaloc is Green Star compliant (VOC), has Zero Global Warming Potential (GWP) and is manufactured without ozone destroying agents such as CFCs or HCFCs.

### Built to Perform, Built to Last

Thermaloc's closed cell technology is unaffected by water and humidity as well as being resistant to detergents, diluted acids, alkalis, alcohols, esters and fungi ensuring performance in even the most demanding applications and over the life of the installation.

Once sealed, Thermaloc's profile ensures an airtight finish preventing potential air condensation especially in cold line applications. Thermaloc's high density foam also absorbs pipe contraction and expansion movements preventing gap formation and erosion of the ferrule over time.





# THERMOBREAK<sup>®</sup> Thermaloc

## HOT & COLD PIPE SUPPORTS

### Physical Properties

Material:	Crosslinked Closed Polyolefin Foam
Density:	300 kg/m <sup>3</sup>
Moisture absorption by volume: (internal)	<1% w/w
Resistance to fungi:	Good
Ozone Resistance:	Excellent
UV Resistance:	Excellent
Operating Temperature Range:	-40°C to 105°C
Thermal Conductivity: (ISO8302-1991)	0.069 W/mk
VOC Emission Rate: (ASTM D5116)	Low VOC Emitting ("Green Star")
Compression Strength: (internal)	850 kPa @ 10% deflection 970 kPa @ 25% deflection 1540 kPa @ 50% deflection

### Fire and Smoke Performance

BS 6853 Annex B (Smoke Toxicity)	Complies (R <1.0)
AS 1530 Part 3 Flammability (Foil Tape Faced)	Complies (AS 4254)

### Size Availability

#### Nominal ID A (mm)

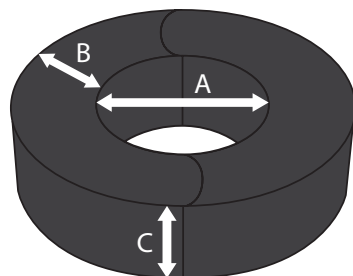
Sizes:	6.35 to 450
Materials:	Available in Copper, IPS & PPR

#### Nominal Thickness B (mm)

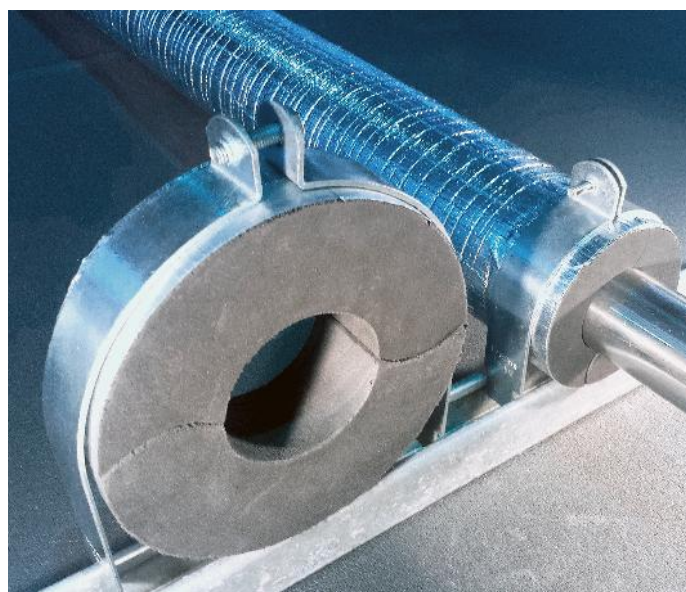
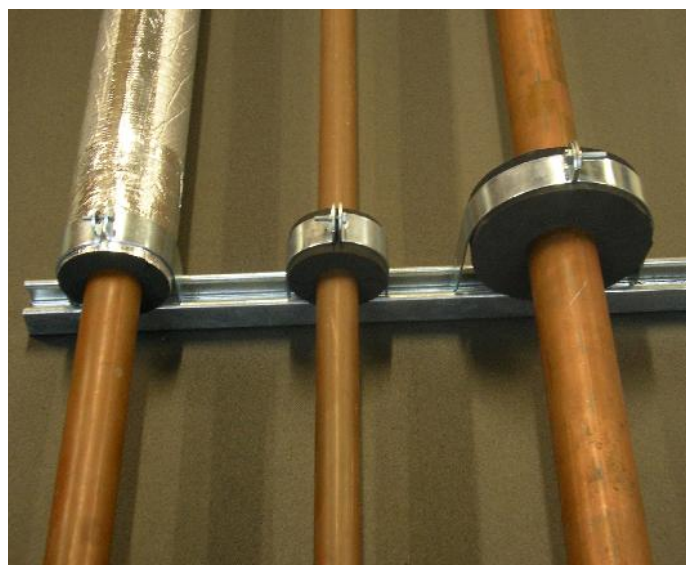
13	30
15	40
20	50
25	>50

#### On Pipe Length C (mm)

50	75
----	----



\*Flat based Thermaloc available for pipe sizes DN 100 / NPS 4 & above



Product certification may be plant specific. Please consult with your local representative.

Distributed by



**PT KREASI SOLUSI INDOPRIMA**  
Aeropolis Technopark Blok WH CS.48  
Jl. Marsekal Surya Darma, Neglasari  
Tangerang, Banten – 15129  
Telp: 021 – 5958 8131

Thermobreak is a registered trademark of Sekisui Chemical Co. Ltd. or its subsidiaries.

**SEKISUI**

**FOAM**  
INTERNATIONAL  
Global Foam Solutions



**Australian Plant**  
1-5 Parraweena Rd, PO Box 2898,  
Taren Point NSW 2229 Australia  
Tel: +61 2 9525 9880  
Fax: +61 2 9525 8004  
Email: info@sekisuifoam.com.au  
Web: thaisekisui.co.th

**Thailand Plant**  
700/329 Moo 6, Amata Nakorn Industrial Estate,  
Tumbol Donhua-loh, Amphur Muang, Chonburi 20000  
Tel: + 66 (0) 3821 3219 ~ 26  
Fax: + 66 (0) 3821 3281  
Email: info@thaisekisui.co.th  
Web: www.sekisuifoam.com.au